

e-review

CTE's Web site review is a handy reference for readers looking for metal cutting and grinding products and services being promoted and offered on the Internet. On the following pages, you'll find the URLs of qualifying CTE advertisers, as well as thumbnails of their home pages and product-line descriptions. For those who prefer to gather supplier information in a more traditional way, each entry also includes the company's phone number.

www.mitsubishicarbide.com



Mitsubishi Materials U.S.A. Corp.
(800) 523-0800

CARBIDE CUTTING TOOLS

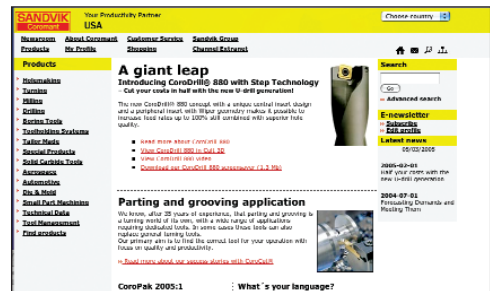
www.alliedmachine.com



Allied Machine & Engineering Corp.
(800) 321-5537

REPLACEABLE-TIP & SOLID-CARBIDE DRILLS

www.coromant.sandvik.com/us



Sandvik Coromant Co.
(800) SANDVIK

CUTTING TOOLS & SYSTEMS

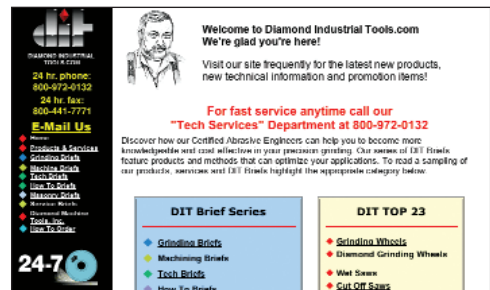
www.manchestertools.com



Manchester Tool Co.
(800) 237-8789

CUTOFF, GROOVING & THREADING TOOLS

www.todit.com



Diamond Industrial Tools.com
(800) 227-5905

PRECISION GRINDING WHEELS

www.kennametal.com



Kennametal Inc.
(800) 446-7738

CUTTING TOOLS

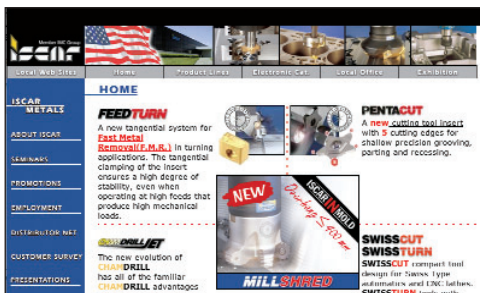
www.yg1usa.com



YG-1 Tool Co. Ltd.
(800) 765-8665

ENDMILLS, DRILLS, TAPS, COLLET CHUCKS & ENDMILL HOLDERS

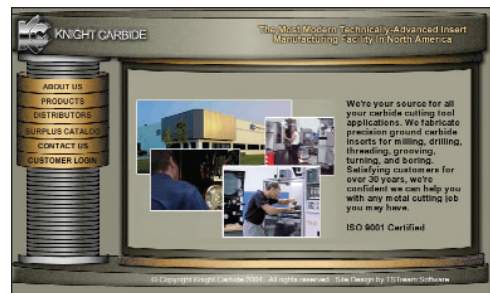
www.iscarmetals.com



Iscar Metals Inc.
(877) BY-ISCAR

CUTTING TOOLS & TOOLING SYSTEMS

www.knightcarbide.com



Knight Carbide
(586) 598-4888

PRECISION-GROUND CARBIDE INSERTS

www.kyocera.com/ceratiip



Kyocera Industrial Ceramics Corp.
(800) 823-7284

CARBIDE, CERAMIC, CBN & PCD CUTTING TOOLS & TOOLHOLDERS

www.tpsintl.com



TPS International Inc.
(800) 423-4031

MACHINE TOOL ATTACHMENTS

www.ingersoll-imc.com



Ingersoll Cutting Tools
(815) 387-6600

CUTTING TOOLS

www.valenite.com



Valenite LLC
(800) 544-3336

CUTTING TOOLS & SYSTEMS

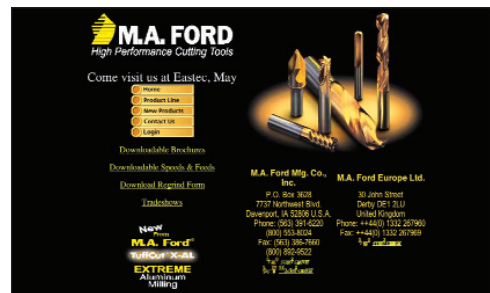
www.thinbit.com



THINBIT
(888) 844-6248

LATHE TOOLING

www.maford.com



M.A. Ford Manufacturing Co. Inc.
(800) 553-8024

CARBIDE & HSS CUTTING TOOLS

www.rollomaticsa.com/mainproducts.php



Rollomatic Inc.
(866) 713-6398

PRECISION TOOL GRINDING MACHINES

www.trutechsystems.com



Tru Tech Systems
(877) TRU-TECH

GRINDING MACHINES & SYSTEMS

www.toolfab.com



Tool Fabrication Corp.
(800) 790-8665

CUTTING TOOLS & SPECIALS

www.martindaleco.com

The Martindale logo features a large, stylized 'M' followed by the word 'MARTINDALE' in a bold, sans-serif font. Below the logo, the text 'Metal-Working Saws' is written in a smaller, italicized font. To the right of the text is a circular saw blade. Below the blade, the contact information is listed: 'PH: 216-521-8567 Fax: 216-521-9476' and 'e-mail: sales@martindaleco.com'. The entire advertisement is enclosed in a black border.

Martindale Products
(216) 521-8567

CIRCULAR METALCUTTING SAW BLADES

CUTTING TOOL ENGINEERING Magazine is protected under U.S. and international copyright laws. Before reproducing anything from this Web site, call the Copyright Clearance Center Inc. at (978) 750-8400.